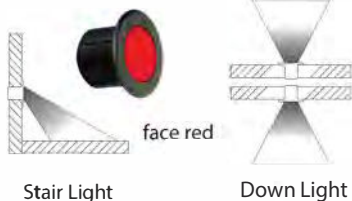


# DEKOR® RGBW Recessed Lighting Installation Instructions

## PARTS

### A RGBW Recessed Light Up Light



### B RGBWDEK•DOT®/DOCKDOTS® light



### C Splitter



RGBW System

» 20', 5', 10', and 20' male to male connection/extension wires and connectors sold separately.

## TOOLS NEEDED



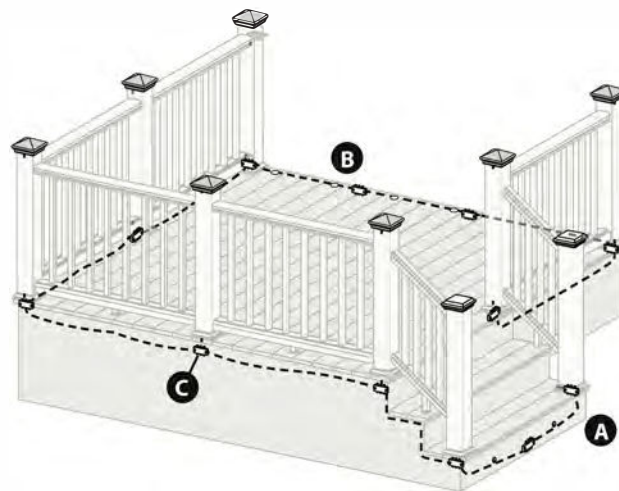
**NOTE:** All wiring and splitters are mounted to inside of framing, picture is just representation of where to place these in general.

**NOTE:** Avoid railing brackets and locations for deck rail lights when running wires up posts.

**NOTE:** It is recommended to install wiring and splitters before decking and railing have been installed.

**DO NOT** run wires between joists and deck boards.

## LIGHTING AND WIRING OVERVIEW

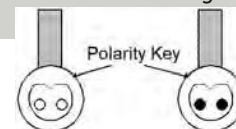


## HELPFUL TIPS

- » Follow the appropriate building and electrical codes when installing all DEKOR® lighting products.
- » Leave wire slack to make fixture terminations.
- » Recessed lights work best when spaced 4' (1.22m) to 6' (1.83m) on center around perimeter of deck.
- » It is recommended to determine placement of lighting under dark conditions prior to drilling/installation.
- » Carefully drill holes perpendicular to surface to avoid producing an enlarged hole. Light fixture will have a loose fit if hole is enlarged.
- » **NOTE:** Silicone caulk will be required to anchor light in place in over-drilled recessed light holes.
- » It is best to use 4-port splitters/repeaters at each light and, depending on spacing, in between each DEK•DOT®/DOCKDOTS® and recessed light. When installing lights within the cable length, two lights can be connected to one 4-port splitter/repeater.
- » Unused splitter female connections need to be capped. Use provided caps or a weather resistant silicone to prevent corrosion or water damage.

- » The 4-port splitter/repeater has one input power port and three output ports. It's critical that the power cable is connected to the input port.
- » DO NOT use more than one transformer on each circuit.
- » Each light has a 6" pigtail that attaches to a male cable (lengths vary). The other end of the male cable attaches to the splitters.
- » To ensure all components are in working condition it is recommended to have power source attached when installing lights.

## CAUTION:



When making a connection between a Plug-N-play connector or splitter, observe the polarity key to make the proper connection. The male and female connectors have a flat side with a V-notch that **MUST MATCH UP**. Do not force the connectors together. The Plug-N-Play connectors are waterproof and they seal with an O-ring and a locking collar.

# DEKOR® RGBW Recessed Lighting Installation Instructions

## General Information

- » ALWAYS check local codes before beginning your project. USE DEKOR® TRANSFORMERS for the Limited Lifetime warranty. Using any other type of transformer the lights will have a 3-year warranty.

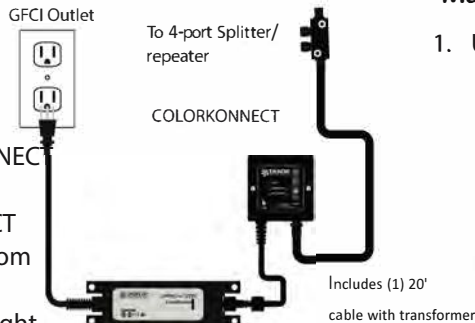
TRANSFORMER CAPACITY EXAMPLE		
Example	5A Transformer EZ Max Transformer	EZ Transformer 2.5A Transformer
DEK•DOT®	26	15

The above chart is an example for the RGBW DEK•DOT® when using a 60-Watt and a 36-watt transformer. You may power up to 60-Watts on a single COLORKONNECT WiFi controller. Please use our transformer calculator for the specific light of choice. You may find on our website at [www.dekorlighting.com](http://www.dekorlighting.com).

## Planning

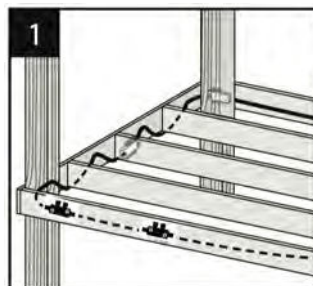
- NOTE:** Prior to installing, plan locations of lights, power supply, and COLORKONNECT. These need to be accessible for service. It is required to install a GFCI to help prevent damage to lights caused by electrical surges.

1. COLORKONNECT WiFi works in a 30' (9m) radius of your home router.
2. Install in a dry location.
3. You must install COLORKONNECT vertically with terminals facing down. COLORKONNECT must be at least 1' (.305 m) from ground level when installed as per federal safety code height regulations.

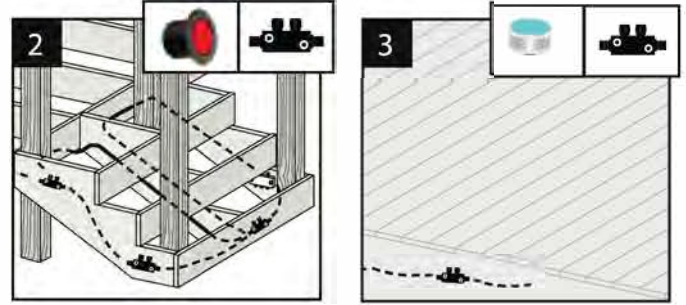


- NOTE:** It is best to install wiring and 4-port splitter/repeaters before railing and decking have been installed. Connect to each required 4-port splitter/repeater using male to male connection cables (lengths vary)

1. You must run wiring under decking structure and behind stringers. DO NOT run wires between joists and deck boards. Use cable staples at least 1/4" (0.6 cm) wide to staple to frame. DO NOT crush wire insulation with staple.



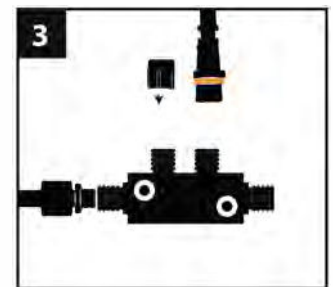
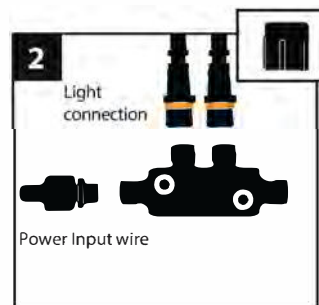
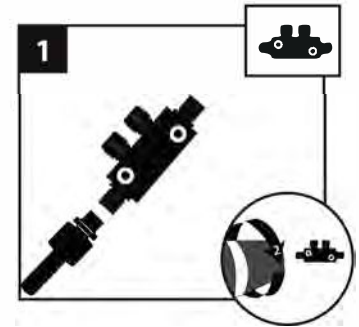
Recessed Light 4-Port Splitter/Repeater DEK•DOT®/Dockdots® 4-port Splitter/Repeater



2. Wiring can be run under deck and behind risers. Use cable staples at least 1/4" (0.6 cm) wide to staple wire to frame. **DO NOT** crush wire insulation with staple. 4-port splitter/repeaters can power up to two lights. Connect the 6" (15.2 cm) female pigtail from light into the male-to-male cable then into 4-port splitter/repeater.
3. 4-port splitter/repeater boosts the single to maintain color clarity throughout the lighting system. Use each 4-port splitter/repeater at each light or with two lights when they are within range of 4-port splitter/repeater. Connect the 6" (15.2 cm) female pigtail from light into the male to male cable. Staple wires to frame with cable staples at least 1/4" (0.6 cm) wide. **DO NOT** crush wire insulation with staple.

## Making Connections

1. Using hardware provided install 4-port splitter/repeater to inside of framing. Install where lighting is present and depending on spacing in between each riser and recessed light.



2. Attach male lead from lights to female connections on 4-port splitter/repeater. Attach male to male connection cables in between each 4-port splitter/repeater. Continue until all wiring from lights are attached to 4-port splitters/repeater and connector cables are attached in between 4-port splitters/repeater.
3. Any unused ports must be sealed off by the provided caps.

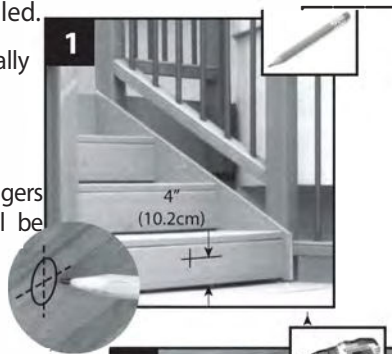
# DEKOR® RGBW Recessed Lighting Installation Instructions

## How to install DEKOR® RGBW Recessed Lighting Installing Stair/Recessed lights

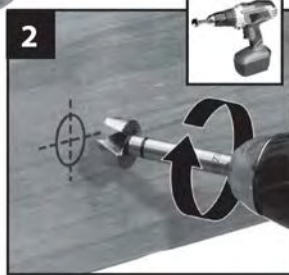
**NOTE:** Recessed lights should be installed after stairs and risers have been installed.

1. Mark location for light, typically 4" (10.2cm), above tread. Check local codes for lighting requirements.

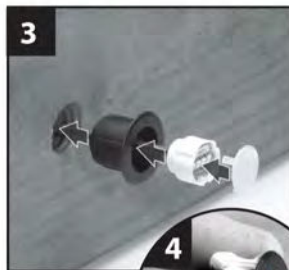
**NOTE:** Avoid areas over stringers when possible because it will be more difficult to drill holes.



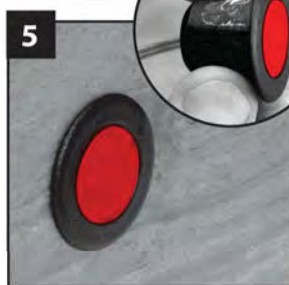
2. Drill a .9" (22.86mm) diameter hole at least 1" (25.4mm) deep into riser. If riser material is thicker than 1" (25.4mm), use a 9/16" (14.29mm) drill bit to create a hole for cables that goes all the way through riser.



3. Connect the cables and push through hole.
4. Remember to add some silicone adhesive caulk around the case to insure proper seal and adhesion.



5. Press light housing into hole, then insert the light. Make connections behind stairs. Male lead cables from recessed light goes into a female connection on the port splitter/repeater. Also attach male-to-male connection wires in between each splitter/repeater. Continue until all wiring from lights are attached to the 4-port splitter/repeaters and connector wires are attached in between 4-port splitter/repeaters. (See making connections section for details.)



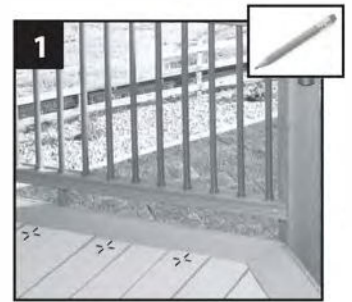
**NOTE:** Stair LEDs are set at 30° angle to cast light on tread. Make sure Stair Lights are set in case with LEDs pointed toward stair tread.

## How to install RGBW DEK•DOT®/DOCKDOTS® Lighting

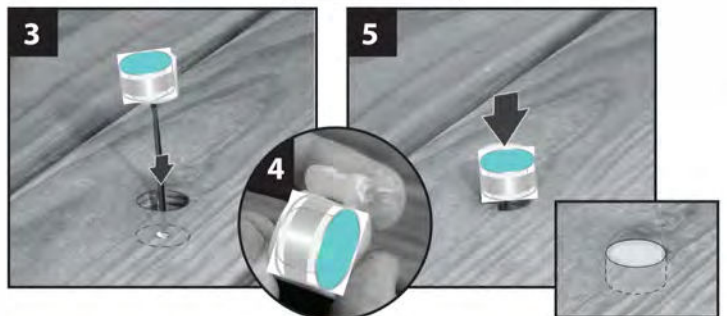
**NOTE:** Install RGBW DEK•DOT®/DOCKDOTS® deck lights after installing decking.

1. Mark location for the lights on deck boards.

**NOTE:** Avoid locations over joists when possible because it will be more difficult to drill holes.



2. Use a drill bit and drill a 1" (25.4mm) hole 3/4" (19.05mm) deep into board. Make sure hole does not go all the way through deck board or light will fall through. Drill a 9/16" (14.29mm) hole through the board to run cables.



3. Push cables through hole. **DO NOT** put DEK•DOT®/DOCKDOTS® into hole by pulling on cables. This may damage cables or light.

4. Remember to use a small amount of silicone adhesive around the dot to insure proper seal and adhesion.

5. Press DEK•DOT®/DOCKDOTS® into hole until flush with surface. Make the connections under deck. Male lead cables from light connect into the female on the 4-port splitter/repeater. Attach male to male to male cables between each 4-port splitter/repeater. Continue until all wiring from lights are attached to a 4-port splitter/repeater and connector cables are attached between the 4-port splitter/repeater.